



**ZERO-EMISSION  
PROPULSION SYSTEM**

## *The Remanufactured All-Electric Transit Bus*

*The Ultimate in Emissions and Waste Reduction*

- *A Recycled bus reduces landfill pollution*
- *Conserves raw material resources*
- *A fraction of the cost of a new bus*



**1(800)300-3751**  
**[completecoach.com/zeps](http://completecoach.com/zeps)**



# Remanufactured Electric Propulsion Transit Buses

Want to make a real impact on the Environment? – The Clean Green Alternative

- A remanufactured bus is rebuilt to like new condition
- Reduces waste at land fills
- Incorporates state of the art Electronic Propulsion System
- And the money you save can go towards other environmentally beneficial projects

## Front and Rear Bumpers

Bumpers and wheel well flares are replaced

## Power Steering

The steering gear box is remanufactured and all moving and wear items of the steering system are replaced

## Engine Closure Doors

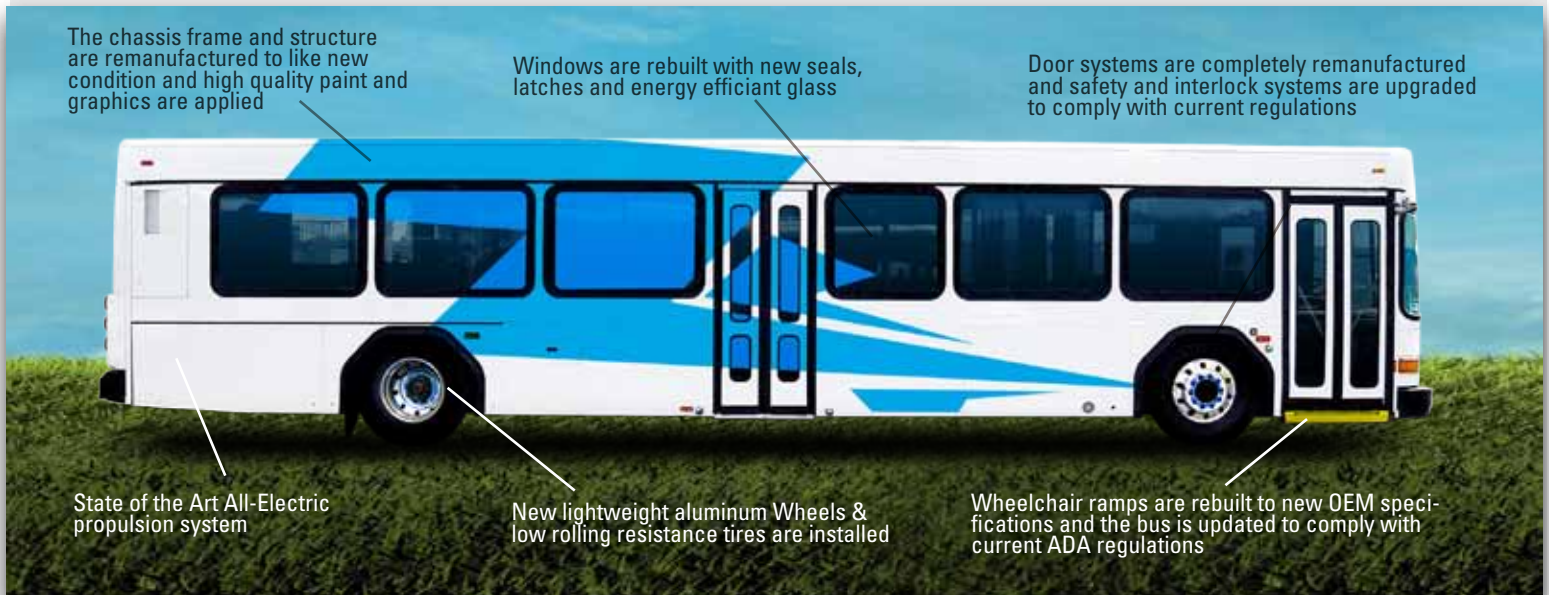
Are remanufactured including gas struts, latches and hinges

## Differential

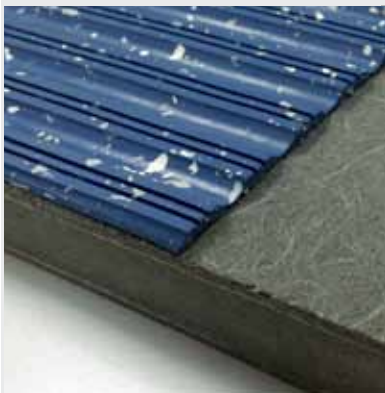
The Differential is remanufactured to OEM specifications

## Steering Wheel & Column

The steering column is completely remanufactured to OEM specifications



## SMART MATERIALS: Lightweight & Energy Efficient for Extended Range



### Composite Light-Weight Flooring

Instead of using heavy marine grade plywood flooring we utilize **high-density polyurethane foam** reinforced with layers of fiberglass. The no-rot and light-weight advantages of foam combined with the structural properties of fiberglass make these composite panels an excellent replacement material for wood. In addition, we also utilize light weight rubber flooring to reach a combined weight savings of over 600 lbs while having stronger rot and corrosive resistance to the elements.



### Energy-efficient LED Lighting

By utilizing **LED Lighting** throughout the bus we have cut down the lighting energy consumption by two-thirds. The life of a high-power white LED is projected to be from 35,000-50,000 hours, compared to 750-2,000 hours for an incandescent bulb. Conventional lightbulbs waste most of their energy as heat. For example, an incandescent bulb gives off 90 percent of its energy as heat, while a compact fluorescent bulb wastes 80 percent of their energy. Since LED contain no glass components, they are not vulnerable to vibration or breakage like conventional bulbs.



### Low Rolling Resistance Tires

Tires' rolling resistance is the majority contributing factor of a vehicle's fuel consumption—about 30%. In low speed applications, when taking into account that the average speed of a transit bus is 18 MPH, this becomes even more important than improving the aerodynamics of a vehicle. To help improve our efficiency we utilize tires with high performance rubber grades that reduce the rolling resistance of tires without negative effects on safety.

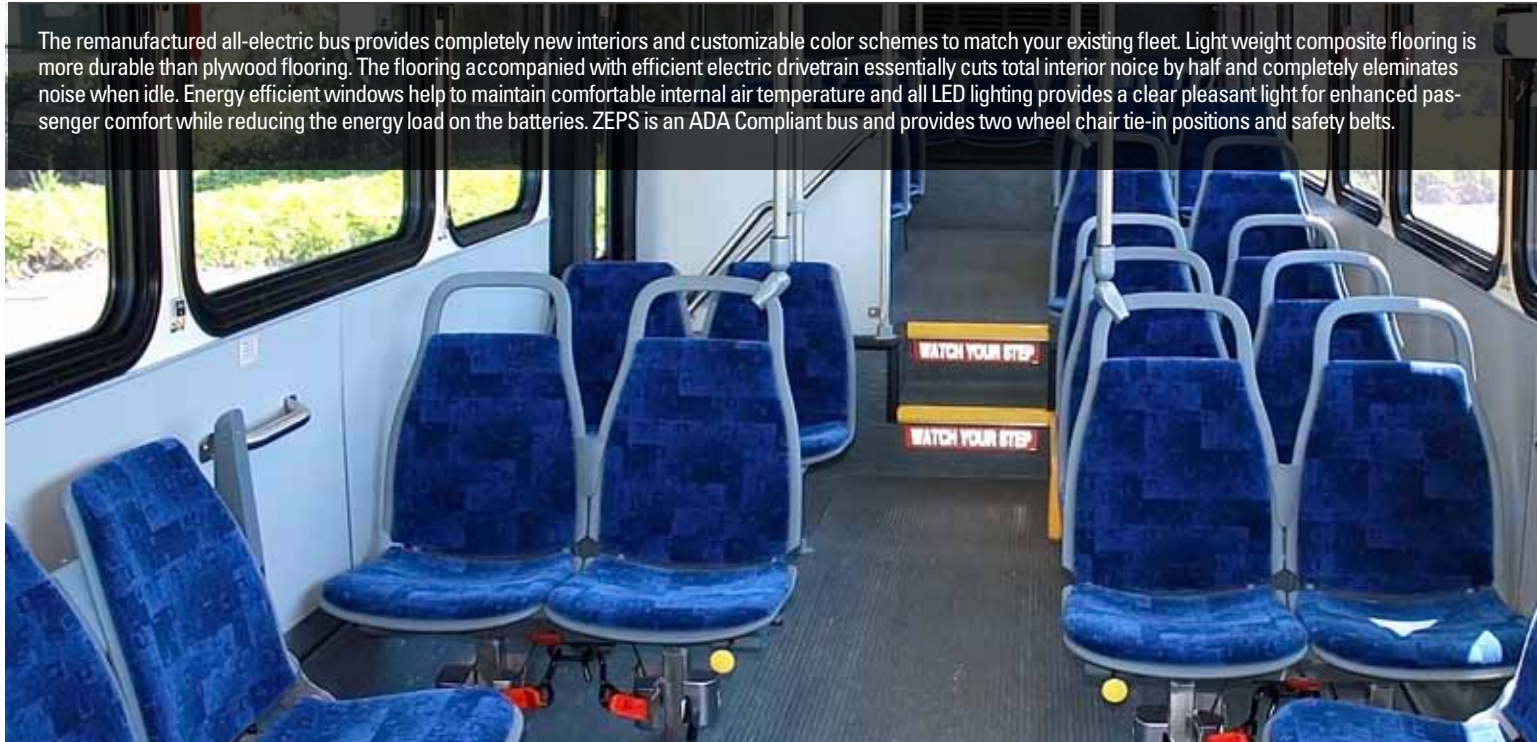


### Intelligent Climate Control System

Intelligent Climate control system is critical for passenger comfort. ZEPS bus provides intelligent climate control that maintains perfect internal temperature in all-weather conditions. The all-electric roof top mounted air conditioning system provides uniform cooling at all vehicle speeds and loads. The energy efficient system is twice more efficient than traditional water based cooling systems and 50% lighter in weight.



The remanufactured all-electric bus provides completely new interiors and customizable color schemes to match your existing fleet. Light weight composite flooring is more durable than plywood flooring. The flooring accompanied with efficient electric drivetrain essentially cuts total interior noise by half and completely eliminates noise when idle. Energy efficient windows help to maintain comfortable internal air temperature and all LED lighting provides a clear pleasant light for enhanced passenger comfort while reducing the energy load on the batteries. ZEPS is an ADA Compliant bus and provides two wheel chair tie-in positions and safety belts.



## ZEPS All Electric Remanufactured Transit Bus Specifications

<b>Length:</b>	<i>40ft/35ft/30ft</i>	<b>Front Axle:</b>	<i>13,420 lb Rating</i>	<b>Electric Drive:</b>	<i>175HP (Dual-wound, direct drive)</i>
<b>Width:</b>	<i>8.5ft</i>	<b>Rear Axle:</b>	<i>24,320 lb Rating</i>	<b>Range:</b>	<i>85-150 Miles</i>
<b>Passengers:</b>	<i>37/32/25 + Standees</i>	<b>GVW Rating:</b>	<i>37,740 lbs</i>	<b>Charge Time:</b>	<i>4-5 hrs</i>
<b>Power Steering:</b>	<i>Electric</i>	<b>Door:</b>	<i>Air Operated</i>	<b>Climate Control:</b>	<i>81,000 BTU/hr</i>
<b>Wheelchair:</b>	<i>Ramp</i>	<b>Electrical:</b>	<i>12/24 Volt</i>	<b>Battery Pack:</b>	<i>213 kWh /242 kWh (Lithium Iron Phosphate)</i>
<b>Brakes:</b>	<i>Air Brakes</i>	<b>Suspension:</b>	<i>Air Suspension</i>		





**ZEPS** brought to you by

**CCW**  
COMPLETE COACH WORKS



## PICK YOUR PLATFORM

Plug-in Charger     Inductive Charger     Quick Charger

## PICK YOUR CHARGING METHOD



Introducing the world's first & only remanufactured transit bus that is sure to deliver clean & environmentally friendly transportation to your community while priced at a fraction of the cost of a new bus.

For More Information:  
[completecoach.com/zeps](http://completecoach.com/zeps)  
1(800) 300-3761

## YOUR **ZEPS**. YOUR WAY.

WATCH THE VIDEO

[completecoach.com/jayleno](http://completecoach.com/jayleno)



**CCW**  
COMPLETE COACH WORKS